

ROTARY EVAPORATOR RE 212 FW-G



Technical features

- Easy manual height adjustment
- Intuitive operation with digital display
- Wide rotation speed (5–315 rpm).
- Evaporation flask can rotate in two directions
- Long lasting vacuum seal
- Two compact heating baths with digital display available (Water bath standard, optional oil bath 10–180 °C)
- Small footprint
- Possibility to place the heating bath on the right or left side
- Protective cover for heating bath optional available

Technical data

MATERIAL FOR PARTS CONTACTING THE MEDIA

| | |
|-----------------|--------------------|
| Glass parts | Glass coated |
| Vapor tube seal | Chemical resistant |

ELECTRICAL PARAMETERS

| | |
|-------------------------------|-------------|
| Nominal voltage [V] | 200–230 VAC |
| Frequency [Hz] | 50–60 |
| Maximum operating current [A] | 5–6 |
| Protection class | IP 20 |

HEATING BATH

| | |
|-------------------------------|-------|
| Heating bath temperature [°C] | 10–90 |
|-------------------------------|-------|

PARAMETERS OF EVAPORATION FLASK

| | |
|---|--------------|
| Size of evaporation flask [ml] | Maximum 2000 |
| Rotational speed of evaporation flask [1/min] | 5–315 |

OTHER DATA

| | |
|--------------------------------|---|
| Total weight [kg] | 13,5 |
| Dimensions W x H x D [mm]: | 554 x 745 x 365 (including water bath) |
| Vacuum and cooling connections | GL14 - 10 mm |

CONTROL UNIT

| | |
|-----------------|---------------------|
| Type of display | Digital Black/White |
|-----------------|---------------------|

| ACCESSORIES | ID |
|--|------------|
| Protective cover for heating bath | 340996 |
| Heating bath BO312-G (for oil, 10–180°C) | on request |

| SPARE PARTS | ID |
|----------------------------------|--------|
| Vapor tube NS29/32 | 345304 |
| Refill valve (Glass + PTFE tube) | 345305 |
| Vacuum seal FKM/PTFE, 2 pieces | 345306 |
| Condenser set, with mounting | 345308 |
| Power adaptor (Base frame) | 345311 |



Protective cover heating bath

Refill valve

Combination possibilities



Rotary Evaporator®
RE 212 FW-G

LABOPORT®
N 820 G



Rotary Evaporator®
RE 212 FW-G

LABOPORT®
SC 840 G

VACUUM PUMP SYSTEM LABOPORT® SC 820 G



Technical features

- Automatic, accurate recognition and monitoring of the boiling point using the integrated ramp function
- No solvent library needed
- High recovery rates even with low boiling point solvents
- Remote-controlled for safe operation from outside closed fume hoods
- Easy, intuitive control via touchscreen display and precise rotation knob
- Four operating modes for nearly all common lab applications
- Integrated rotation speed control for precise vacuum control
- Integrated gas ballast valve
- Environmentally friendly
- ATEX compliant to (Ex) II 3/-G Ex h IIB+H2 T3 Gc internal atmosphere only

Technical data

| | |
|--|------------------------------------|
| Flow rate [m ³ /h] at atm. pressure | 1,2 |
| Flow rate [l/min] at atm. pressure | 20 |
| Ultimate vacuum [mbar abs.] | 6,0 |
| Operating pressure [bar] | 0,1 |
| Voltage [V] | 100 – 240 |
| Frequencies [Hz] | 50/60 |
| Protection class | IP30 |
| Power P ₁ [W] | 60 |
| Operating current [A] | 0,35 (240 V AC) 0,66 (100 V AC) |
| With thermal switch and power fuse | |

REMOTE-CONTROL UNIT/CONTROLLER

| | |
|--|---|
| Connectivity | USB-A (Bluetooth) USB-Mini/USB-C (Cable connection) |
| Power supply in remote-control operation | Via integrated batteries or using the wireless charger included |
| Battery operating life | max. 8 h |
| Operation of the device | Touchscreen/ Rotary/push knob |
| Weight [kg] | Controller: 0,69 Docking station: 0,26 |
| Battery type | Nickel-metal hybrid (Ni/Mh) |

MATERIALS

| | |
|-----------|-------------|
| Pump head | TFM™ PTFE |
| Diaphragm | PTFE-coated |
| Valves | FFPM |

OTHER DATA

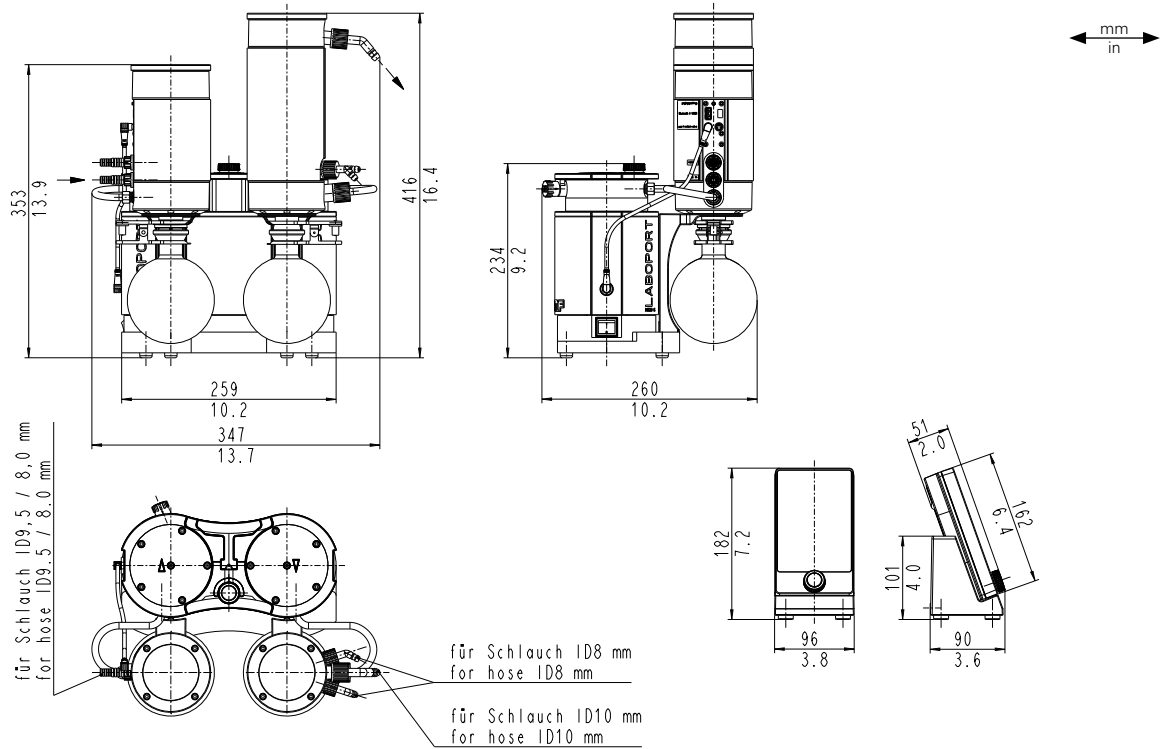
| | |
|--|--|
| Weight [kg] | 13,35 |
| Hose connections | Inlet: For hose ID 8 – 9,5 Outlet: For hose ID 10 |
| Dimensions W x H x D [mm] | Vacuum pump system: 347 x 416 x 260 Controller: 162 x 96 x 51 Docking station: 96 x 88 x 101 |
| Permissible media and ambient temperature [°C] | +5 bis +40 |

SPARE PARTS

| SPARE PARTS | ID |
|---------------------------------|--------|
| Spare parts kit pump N 820 G | 331051 |
| Spare parts kit System SC 820 G | 338823 |

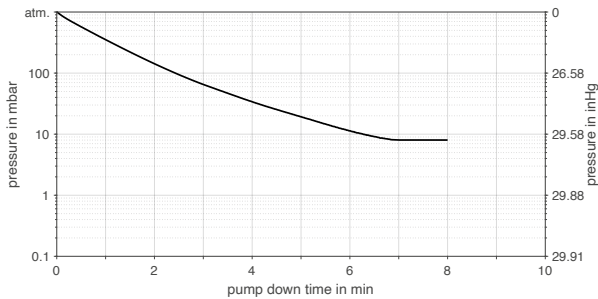
Dimensions

SC 820 G

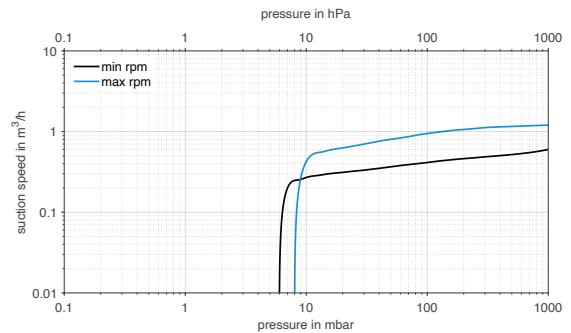


Performance Characteristics

PUMP DOWN TIME FOR 20 LITER RECEIVER



SUCTION PUMPING SPEED AT MIN./MAX. MOTOR SPEED



| ACCESSORIES | ID |
|--|--------|
| Separator flask | 047729 |
| High performance condenser with pressure relief valve | 114855 |
| Hose connector with O-ring (FPM) | 323609 |
| Hose connector PP (for hose ID 10) | 026237 |
| Screw connection cap red, GL 18 (for hose connector ID 026237) | 025980 |
| Hose connector PP (for hose ID 8) | 025981 |

| | |
|--|--------|
| Screw connection cap red, GL 14 (for hose connector ID 025981) | 025982 |
| Key for hose connector | 316279 |
| Hose-BGR for Separator flask (1x for SC 820 G) | 329998 |
| Hose BGR for high performance condenser (1x for SC 820 G) | 317157 |
| Docking station controller | 336784 |
| Battery pack controller | 339004 |

Modular expandable
From basic pump to system





WolfLabs

Pricing on any accessories shown can be found by keying the part number into the search box on our website.

The specifications listed in this brochure are subject to change by the manufacturer and therefore cannot be guaranteed to be correct. If there are aspects of the specification that must be guaranteed, please provide these to our sales team so that details can be confirmed.

www.wolflabs.co.uk

Tel : 01759 301142

Fax : 01759 301143

sales@wolflabs.co.uk

Please contact us if this literature doesn't answer all your questions.